



TECHNICAL INFORMATION: „PAN BEAM SETUP“ SOFTWARE

PAN BEAM SETUP 4 - UPDATE INFORMATION RELEASE 01874.V1

With release 01874.V1 for the „Pan Beam Setup 4“ software, changes have been made to the communication structure for the transport of control data via AoIP networks (Dante / AES67), see also the change log information when installing the update.

The change log can be called up again via the menu item „File -> Programme update“.

The multicast address of 224.0.1.4 previously used for communication has been changed to the multicast address 239.0.1.4. Multicast data traffic via the address must not be blocked in the system.

⚠ NOTICE

The multicast address range 239.0.1.4 is supported from Dante firmware 18.64.1.0. This firmware can be downloaded and installed using the „Dante Updater“ integrated in the „Dante Controller“ software.

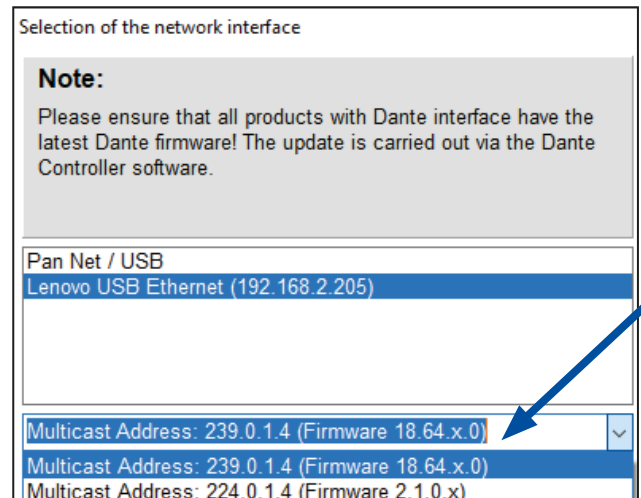
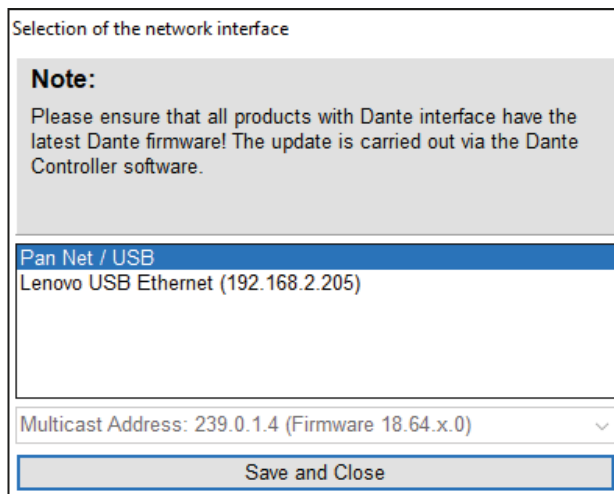
Mixed operation of different firmware versions is not permitted.

Note on starting the software - selecting the multicast address

When starting the „Pan Beam Setup“ software, a selection must be made as to which interface support the software is to be used with:

- Pan Net / USB
- Network connection for AoIP (Dante / AES67)

When selecting the network connection, the selection field for the multicast address is activated. The new multicast address 239.0.1.4 is selected by default.



⚠ NOTICE

If the Dante firmware installed in the Pan Acoustics devices does not match the selected multicast address, the speakers cannot be found and controlled by the software. To change the multicast address, the software must be restarted.

⚠ NOTICE - Firewall configuration

In the event of communication issues via the AoIP (DANTE/AES67) network, it may be necessary to deactivate the firewall temporarily when using the Pan Beam Setup 4 software. For the Pan Beam Setup 4 software, the computer's firewall must be configured so that receiving and sending data (UDP/TCP) is permitted on all ports. Depending on the firewall, it may be necessary to enter the required connection rules manually. Changes to the firewall should only be made in consultation with the IT department.



All products are designed, developed and manufactured by Pan Acoustics in Germany.
Pan Acoustics reserves the right to make product changes without prior notice.

www.pan-acoustics.de